

University : Yeditepe University  
 Country : Turkey  
 Web Address : [www.yeditepe.edu.tr](http://www.yeditepe.edu.tr)

## [2] Energy and Climate Change (EC)

### [2.5] Renewable energy sources and their amount of the energy produced (in kilowatt-hour)



Solar Panels (Yeditepe University, Turkey)



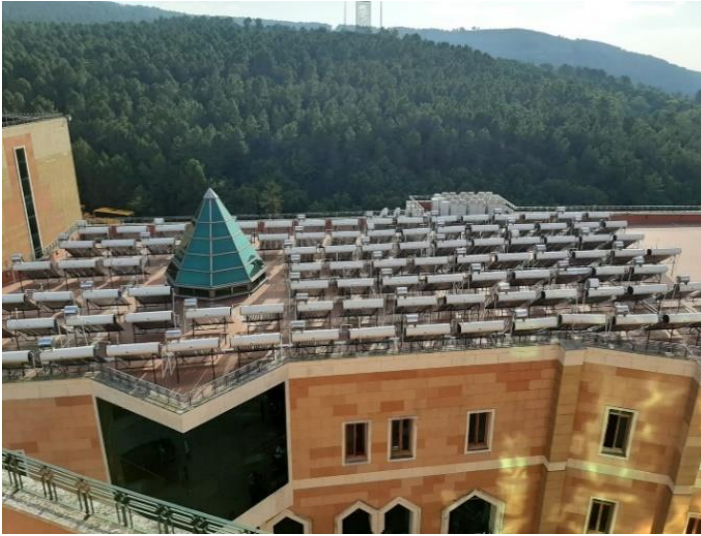
Solar Panels (Yeditepe University, Turkey)



Solar Panels (Yeditepe University, Turkey)



Solar Panels (Yeditepe University, Turkey)



Heating for the Building (Yeditepe University, Turkey)



Heating for the Building (Yeditepe University, Turkey)

**Description:**

**1.** The renewable energy source produced on the campus site is the solar energy. There are solar panels for the electricity production on the roofs of the buildings within the campus area. The total solar power production capacity annually is **885678 kWh**.

**2.** Solar system for heating hot water is present on the roof of the Social Facilities Building. There are 385 solar water heaters. The hot water capacity of one of these heaters is 125 liters. In total, 48125 liters of water are supplied from these heaters.

**Additional evidence link :**

- <https://sustainable.yeditepe.edu.tr/>
- <https://yeditepe.edu.tr/en/yeditepe-university-has-started-produce-its-own-energy>
- <https://sustainable.yeditepe.edu.tr/affordable-and-clean-energy>
-



University : Yeditepe University  
Country : Turkey  
Web Address : [www.yeditepe.edu.tr](http://www.yeditepe.edu.tr)

## [2] Energy and Climate Change (EC)

### [2.1] Energy Efficient Appliances Usage



#### Description:

Yeditepe University aims to improve energy savings by various sustainable energy management applications. The energy consumption is monitored energy efficient appliances and sensor systems are used throughout the campus area. While there are LED illuminations and energy saving lamps throughout the campus, energy efficient devices are used in laboratories.

Appliance	Total Number	Total number energy Efficient appliances	Percentage
LED Lamp	24892	13394	54%
Motion Sensor	610	610	100%
		<b>Average Percentage</b>	<b>%77</b>

#### Additional evidence link :

- <https://sustainable.yeditepe.edu.tr/>
- <https://sustainable.yeditepe.edu.tr/affordable-and-clean-energy>